

3D LAND GEOPHONE WITH USB INTERFACE MOD. GEMINI-2

www.pasigeophysics.com

2Hz sensors
Compact-size
New GPS option



Through Gemini **USB interface** and the related **data acquisition software** your PC becomes a perfect, high performance instrument for both data recording and post-processing analysis.

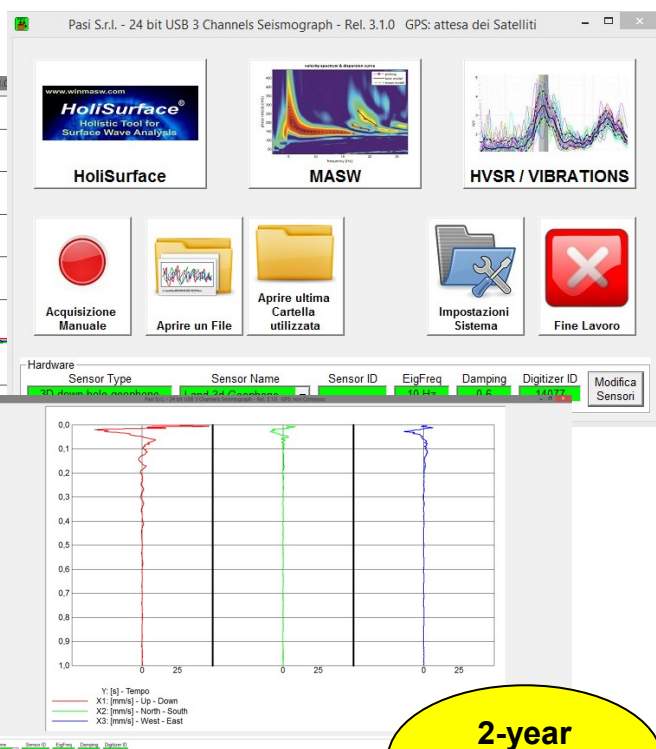
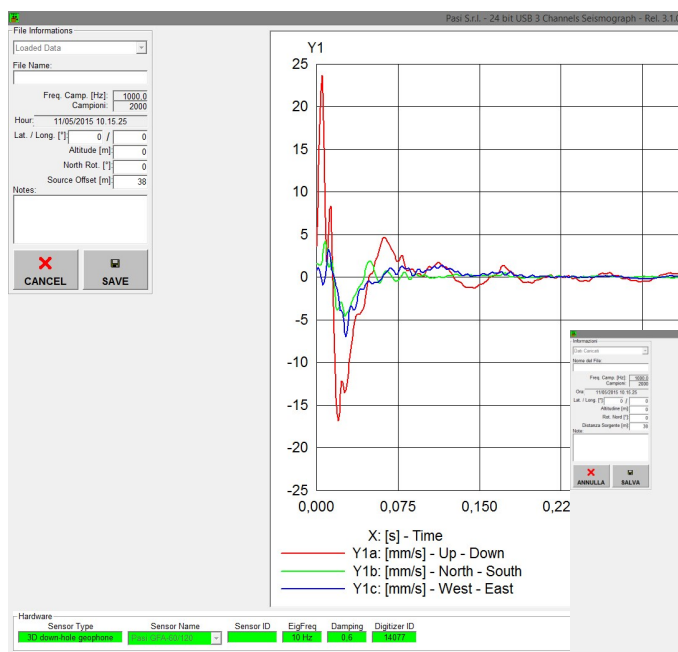
...NOT ONLY HVSR

Gemini-2 is a compact device for **HVSR, MASW and Vibration Analysis**: a single waterproof case with an integrated low frequency, high performing 3D-geophone assembly (with **real 2Hz sensors properly coupled**) and a powerful **true 24 bit data acquisition board** with USB port for external PC.

APPLICATIONS:

- HVSR
- SURFACE WAVES (active and passive methods, Rayleigh & Love waves analysis - with **external trigger option**)
- ACTIVE SEISMICS (with **external trigger option**)
- VIBRATION ANALYSIS & MONITORING
- HOLISURFACE® (data processing with third-party software)

The **GPS option** also guarantees georeferencing and timing of the Gemini; additional Gemini units can be further synchronized.



2-year
warranty

Software available in: English - French - Spanish - Italian

P.A.S.I. S.R.L. — Via Galliari 5/E — 10125 Torino - Italy
tel. +39 (0)11 6507033 - sales@pasisrl.it - www.pasigeophysics.com



3D LAND GEOPHONE WITH USB INTERFACE MOD. GEMINI-2

www.pasigeophysics.com

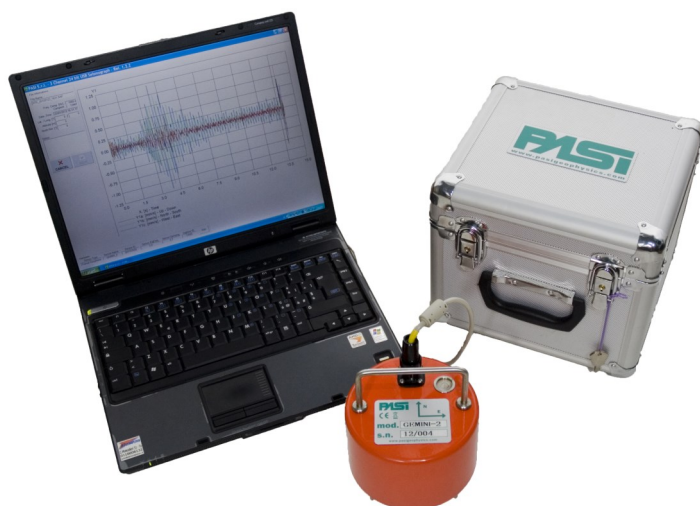
TECHNICAL SPECIFICATIONS GEMINI-2

DATA ACQUISITION BOARD

Power Supply / Data Recording	through USB port of external PC (not included)
Data Conversion	24 real bits Sigma-Delta A/D converter
Sampling Frequencies	Max. Freq. 8ksps, simultaneously on 3+1 channels
S/N Ratio	Max 117 db
Bandwidth +/- 0.1 dB	108 Hz @ 1ksps
Bandwidth -3 dB	212 Hz @ 1ksps
No. Of Channel	3 + 1 (trigger)
Data Output Format	SAF (Sesame ASCII Format) / SEG2 (.dat)

GEMINI 2 SENSORS

Nat. Resonance Frequency	2 Hz \pm 10%
Sensibility	2 V/cm•S ⁻¹ \pm 5%
Internal Resistance	5.8 k Ω \pm 5%
Damping	0.7 \pm 10%
Harmonic Distortion	\leq 0.2%
Insulating Resistance	\geq 10 M Ω
Working Temperature	from -25°C to +55°C
Sensor Clamping	automatic when not in use
Dimensions	Diam. 128 mm h. 175mm (spike excl.)
Weight	2.4 Kg



Available Accessories:

- External trigger Option
- GPS Option (georeferencing, timing and synchronization)
- Starter Geophone
- Trigger Lead-in cable (graduated in cm)

P.A.S.I. S.R.L. — Via Galliari 5/E — 10125 Torino - Italy
tel. +39 (0)11 6507033 - sales@pasisrl.it - www.pasigeophysics.com

Specifications subject to change without notice

