

Accessory Guide

StructureScan **Mini** XT

www.geophysical.com

Expanding Capabilities and Functionality

Released in 2015, the StructureScan Mini XT was designed as a flexible concrete scanning system that allows users the option to add accessories and tailor the product to the specific application. The Palm XT antenna is the third accessory to the family, joining the Mini XT extension pole with six-button remote operation, and the LineTrac XT AC current detect module. The StructureScan Mini XT is the industry standard for concrete scanning and provides the perfect combination of price and performance.

Palm XT

Palm XT is a small form factor GPR antenna that gives users unprecedented access in tightly spaced areas and enables easy overhead scanning. This 2300 MHz Palm XT antenna offers superior depth penetration and resolution. It features a full keypad control via the antenna top that provides remote control of the user interface.

The antenna has seamless software integration with three data collection modes that provide the user with in-field options for data collection.

- **Standard mode** — Requires no special set up, and is ready for plug-and-play operation
- **Cross Polarization mode** — Highlights non-metallic objects, such as PVC, and de-emphasizes metallic objects like rebar and wire mesh
- **Side Car mode** — Transitions the survey wheel to the side of the antenna and allows it to fit into smaller spaces



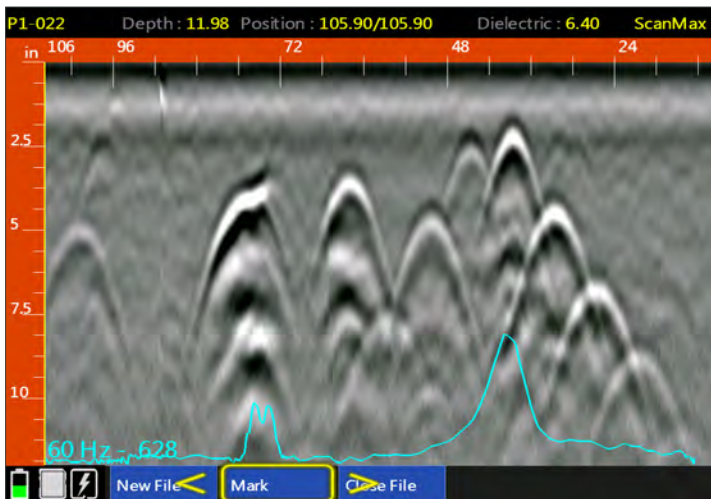
LineTrac[®] XT

LineTrac XT adds the ability to detect AC power and induced RF present in conduits. Locating specific power sources in concrete can be very complex. Site conditions resulting from various renovations and modifications can make the job more difficult and time consuming. This accessory combines radar data with a magnetometer. LineTrac XT detects extremely low amplitude AC signals associated with difficult to locate conduits.

LineTrac has a number of features to easily identify target utilities, including:

- Seamless fusion with GPR data
- Aids in target discrimination
- Detection at 50/60 Hz
- Rugged, IP-65 rated enclosure

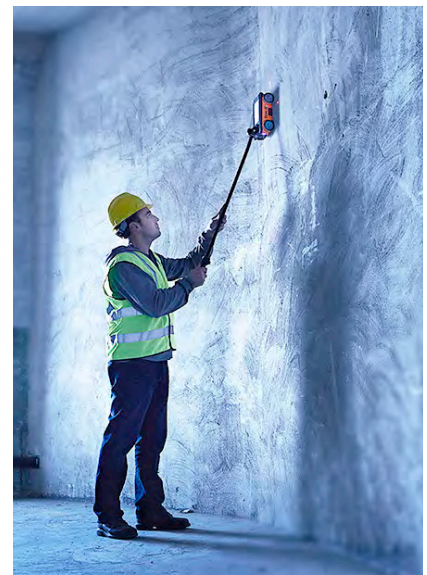
Simply insert the LineTrac XT into the front accessory port on the Mini XT system, select the LineTrac XT module and choose between 50 Hz or 60 Hz.



Screen image illustrates GPR data of a suspended concrete slab with metallic reinforcement and a conduit with the presence of live power, indicated by the blue peaks.

Additional Accessories

- Li-ion battery
- Dual bay battery charger with four (4) international adapters
- Extension pole with six-button remote capability
- Extension pole case
- RADAN 7 for StructureScan Mini



sales@geophysical.com

40 Simon Street • Nashua, NH 03060-3075
Tel: 603.893.1109 • Toll Free: 800.524.3011 • Fax: 603.889.3984

Geophysical Survey Systems, Inc.

Copyright © 2017 All Rights Reserved
Geophysical Survey Systems, Inc.
08.01.2017